

ANALYZING WORKPLACE INJURIES IN THE Educational Services Industry

To reduce workplace injuries and fatalities, we must understand when, why and how they happen. Having these specific analytics on hand will allow businesses in hazardous industries to target problem areas and initiate solutions that will lower the number of workplace accidents.

The Educational Services sector is comprised of establishments that provide instruction and training in a wide variety of subjects. This instruction and training is provided by specialized establishments, such as schools, colleges, universities and training centers. These establishments may be privately owned and operated for profit or not for profit, or they may be publicly owned and operated.

The highest number of injury incidents in the Educational Services industry occurred:



at
Noon



on
Thursday



in
May



on
Multiple
Body Parts



on
Females



within
50-59 Age
Group



in
Boone

1

FATALITY OCCURRED
 IN EDUCATIONAL SERVICES IN 2023

Total Fatalities in All Industries ▶ 87

217

LOST TIME INCIDENTS
 IN EDUCATIONAL SERVICES IN 2023

Total Lost Time Incidents in All Industries ▶ 6,934

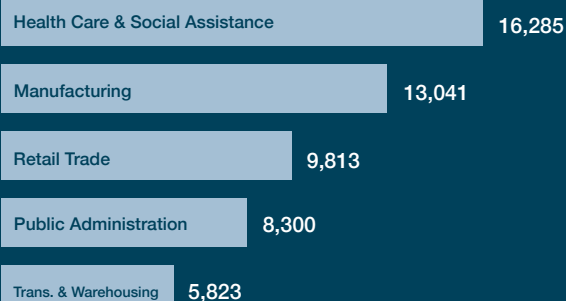
Total Incidents in Top 5 Industries ▶ 53,262

Total Incidents in All Industries ▶ 88,295

60% of All Incidents are in Top 5 Industries

RANKED #8
 IN HIGHEST NUMBER OF
 INJURY INCIDENTS

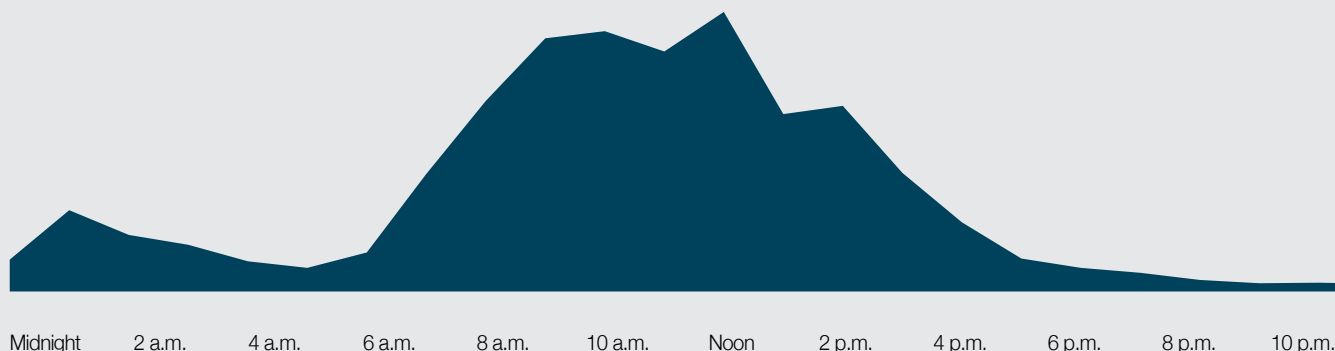
Top Industries in Number of Injury Incidents





Injury Incidents by Time of Day

Most Educational Services incidents occurred during the Noon hour.



Injury Incidents by Day of the Week Most Educational Services incidents occurred on a Thursday.

S	M	T	W	T	F	S
81	764	924	899	939	696	117

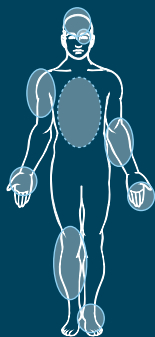


Injury Incidents by Month The highest number of Educational Services incidents occurred in May.

JAN	FEB	MAR
367	422	380
APR	MAY	JUN
392	461	272
JUL	AUG	SEP
226	366	447
OCT	NOV	DEC
438	354	295



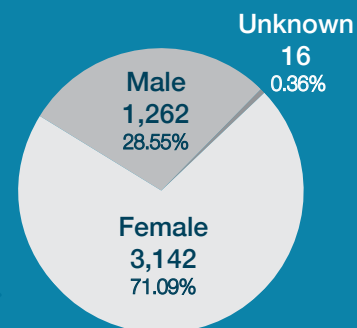
Top 10 Injury Incidents by Body Part In Educational Services, Multiple Body Parts was the category with the highest number of incidents.



Multiple Body Parts	630
Knee(s)/Lower Leg(s)	491
Finger(s)/Thumb(s)	460
Wrist(s)/Hand(s)	423
Ankle(s)/Foot/Feet	368
Elbow(s)/Lower Arm(s)	313
Back	292
Upper Arm(s)/Shoulder(s)	272
Head Soft Tissue	222
Eye(s)	126



Injury Incidents by Gender In Educational Services, females had over two times more incidents than males.





Incidents by Age Group
The 50-59 age group had the highest number of injury incidents in Educational Services.

Age Group	Educational Services	All Industries Total
10-15	0	61
16-19	81	3,864
20-29	917	21,893 <small>Highest Total</small>
30-39	916	19,360
40-49	872	16,435
50-59	952	16,146
60-69	576	8,990
70-79	97	1,391
80-89	9	148
Unknown	0	7



Incidents by County
Boone County had the most incidents in the Educational Services industry.



Top 5 Counties with the Most Incidents

Boone	795	
St. Louis County	717	St. Louis City 511
Jackson	697	Clay 457

Injury Incidents by Cause
Most incidents in Educational Services are struck or injured by a fellow worker, patient, or other person

Fellow Worker/Patient	635
Struck or Injured, NOC	496
On Same Level	481
Fall, Slip, Trip, NOC	224
Lifting	174

Injury Incidents by Nature
The highest number of Educational Services injury incidents are contusions

Contusion	1,438
Strain or Tear	987
Laceration	454
Sprain or Tear	296
Puncture	257

Visit safeatwork.mo.gov to learn more ways to keep your workplace safe.

